



Normal



Caution



Serious



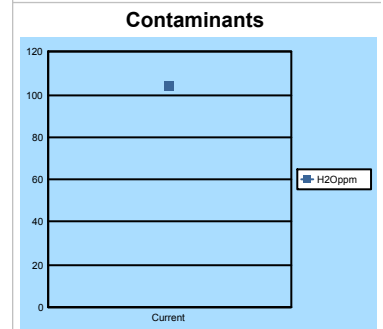
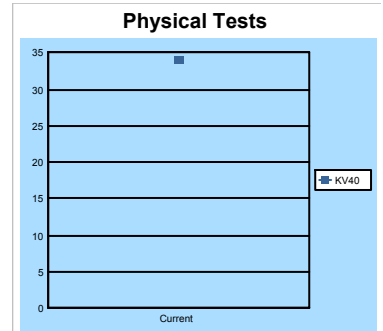
Critical



Address: Pearson Hose and Hyd
 366 DUKESWAY TEAM VALLEY TRADING ESTATE, GATESHEAD, TYNE AND WEAR
 NE110PZ
 Sample Date: 29/07/2021
 Received Date: 20/08/2021
 Serial Number: 1235
 Unit No. / Model: FLEXLOK Rewind Spool - 1235
 Type: Sampled system: Hydraulic
 JS Sys: Baker Hughes Hydraulic (Lube)
 Job No Bottle Label: K043229
 Brand: Shell Tellus S2 MX 32 (ISO VG)

Diagnosis: Condition satisfactory, continue sampling at the recommended interval

Sample Details	Test Basis	Units	Current Result	Previous #1	Previous #2
Lab No	-	-	OAL2516088		
Sample Date	-	-	29/07/2021		
Meter Hrs	-	-	0		
Fluid Hrs	-	-	0		
Fluid Added	-	-	0.00		
Fluid Changed	-	-	No		
Filter Changed	-	-	No		
Brand	-	-	Shell Tellus		
Physical Tests					
Viscosity @ 40°C	ASTMD7279	mm2/s	34		
Condition					
Colour	ASTM D1500	0 to 8	3.5		
Oxidation	JOAP	Abs/cm	4		
Particles					
ISO Code	ISO4406	code	18/16/13		
Overall NAS	SAE4059	Code	8		
PC @ 4µ	ASTMD7647	count/ml	1455		
PC @ 5µ	ASTMD7647	count/ml	724		
PC @ 6µ	ASTMD7647	count/ml	423		
PC @ 7µ	ASTMD7647	count/ml	277		
PC @ 8µ	ASTMD7647	count/ml	194		
PC @ 10µ	ASTMD7647	count/ml	104		
PC @ 12µ	ASTMD7647	count/ml	65		
PC @ 14µ	ASTMD7647	count/ml	43		
PC @ 15µ	ASTMD7647	count/ml	36		
PC @ 20µ	ASTMD7647	count/ml	20		
PC @ 21µ	ASTMD7647	count/ml	17		
PC @ 25µ	ASTMD7647	count/ml	11		
PC @ 30µ	ASTMD7647	count/ml	4		
PC @ 38µ	ASTMD7647	count/ml	1		



Lab Address: Unit 5 Creamery Trade Park, Station Road, Mochdre, Colwyn Bay, LL28 5EF

Interpreted By Mark Williams



Normal



Caution



Serious



Critical



Address	Pearson Hose and Hyd 366 DUKESWAY TEAM VALLEY TRADING ESTATE, GATESHEAD, TYNE AND WEAR NE110PZ	Serial Number	1235
Sample Date	29/07/2021	Unit No. / Model	FLEXLOK Rewind Spool - 1235
Received Date	20/08/2021	Type	Sampled system: Hydraulic
		JS Sys	Baker Hughes Hydraulic (Lube)
		Job No Bottle Label	K043229
		Brand	Shell Tellus S2 MX 32 (ISO VG)

Diagnosis: Condition satisfactory, continue sampling at the recommended interval

Particles			
PC @ 50	ASTMD7647	count/ml	0
PC @ 70µ	ASTMD7647	count/ml	0
Contaminants			
Appearance Fluid	OAL Method	Visual	Bright
Appearance Solids	OAL Method	Visual	Clear
Lithium (Li)	ASTMD5185	mg/kg	1
Lithium (Li)	LubeWear ®	mg/kg	0
Potassium (K)	LubeWear ®	mg/kg	0
Silicon (Si)	ASTMD5185	mg/kg	1
Sodium (Na)	LubeWear ®	mg/kg	1
Titanium (Ti)	ASTMD5185	mg/kg	0
Titanium (Ti)	LubeWear ®	mg/kg	0
Vanadium (V)	ASTMD5185	mg/kg	0
Vanadium (V)	LubeWear ®	mg/kg	0
Water (dissolved)	ASTMD6304	mg/kg	104
Water (free)	Crackle & CaH2	%	<0.1
Wear Metals			
Aluminium (Al)	ASTMD5185	mg/kg	0
Aluminium (Al)	LubeWear ®	mg/kg	0
Cadmium (Cd)	ASTMD5185	mg/kg	0
Cadmium (Cd)	LubeWear ®	mg/kg	0
Chromium (Cr)	ASTMD5185	mg/kg	0
Chromium (Cr)	LubeWear ®	mg/kg	0
Copper (Cu)	ASTMD5185	mg/kg	1
Copper (Cu)	LubeWear ®	mg/kg	1
Iron (Fe)	ASTMD5185	mg/kg	0
Iron (Fe)	LubeWear ®	mg/kg	0
Lead (Pb)	ASTMD5185	mg/kg	0
Lead (Pb)	LubeWear ®	mg/kg	0
Manganese (Mn)	ASTMD5185	mg/kg	0

Lab Address: Unit 5 Creamery Trade Park, Station Road, Mochdre, Colwyn Bay, LL28 5EF

Interpreted By Mark Williams



Normal



Caution



Serious



Critical



Pearson Hose and Hyd
 Address 366 DUKESWAY TEAM VALLEY TRADING ESTATE, GATESHEAD
 GATESHEAD, TYNE AND WEAR
 NE110PZ
 Sample Date 29/07/2021
 Received Date 20/08/2021

Serial Number 1235
 Unit No. / Model FLEXLOK Rewind Spool - 1235
 Type Sampled system: Hydraulic
 JS Sys Baker Hughes Hydraulic (Lube)
 Job No Bottle Label K043229
 Brand Shell Tellus S2 MX 32 (ISO VG)

Diagnosis: Condition satisfactory, continue sampling at the recommended interval

Wear Metals			
<u>Manganese (Mn)</u>	LubeWear ®	mg/kg	0
<u>Nickel (Ni)</u>	ASTMD5185	mg/kg	0
<u>Nickel (Ni)</u>	LubeWear ®	mg/kg	0
<u>Silver (Ag)</u>	ASTMD5185	mg/kg	0
<u>Silver (Ag)</u>	LubeWear ®	mg/kg	0
<u>Tin (Sn)</u>	ASTMD5185	mg/kg	0
<u>Tin (Sn)</u>	LubeWear ®	mg/kg	0
Additives			
<u>Barium (Ba)</u>	ASTMD5185	mg/kg	0
<u>Boron (B)</u>	ASTMD5185	mg/kg	0
<u>Calcium (Ca)</u>	ASTMD5185/D7751	mg/kg	68
<u>Magnesium (Mg)</u>	ASTMD5185/D7751	mg/kg	2
<u>Molybdenum (Mo)</u>	ASTMD5185/D7751	mg/kg	0
<u>Phosphorus (P)</u>	ASTMD5185/D7751	mg/kg	244
<u>Zinc (Zn)</u>	ASTMD5185/D7751	mg/kg	292



Normal



Caution



Serious



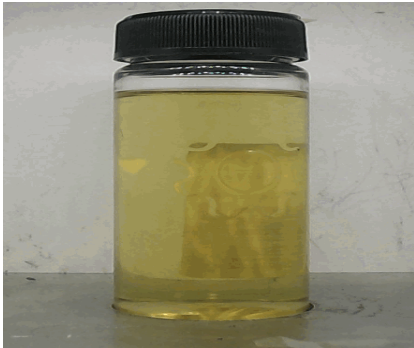
Critical



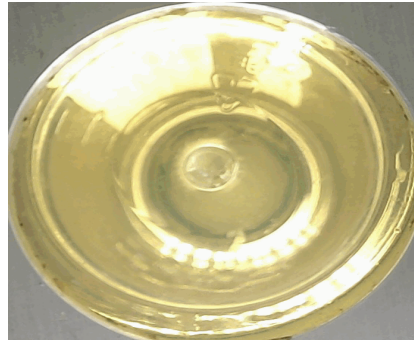
Address Pearson Hose and Hyd
 366 DUKESWAY TEAM VALLEY TRADING ESTATE, GATESHEAD
 GATESHEAD, TYNE AND WEAR
 NE110PZ
 Sample Date 29/07/2021
 Received Date 20/08/2021

Serial Number 1235
 Unit No. / Model FLEXLOK Rewind Spool - 1235
 Type Sampled system: Hydraulic
 JS Sys Baker Hughes Hydraulic (Lube)
 Job No Bottle Label K043229
 Brand Shell Tellus S2 MX 32 (ISO VG)

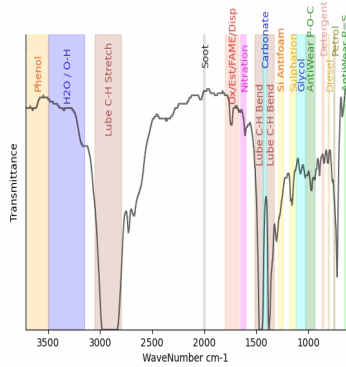
Diagnosis: Condition satisfactory, continue sampling at the recommended interval



Sample as received side view



Sample as received underneath view



Fourier Transform InfraRed (FTIR)

Lab Address: Unit 5 Creamery Trade Park, Station Road, Mochdre, Colwyn Bay, LL28 5EF

Interpreted By Mark Williams